

# AVOYELLES PARISH



## Ben Routh Recreational Park

Located on the Red River off Hwy 1196 in Effie. Picnic area, pavilions, and restrooms are on site. Perfect for out-reach classroom presentations. Home of "Easter on the Red River Festival" held annually. Free/ allowable time varied



## Avoyelles Public Library

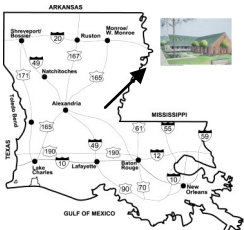
New location at 660 North Main Street, Marksville. Open MTThF 8-5 W 9-6 Sat 9-1. Meeting space. Programs scheduled by appointment. 318.253.7559 Free/ allowable time varied



## Avoyelles Parish Courthouse

Located in the Historic Commercial District of Marksville. Houses several governmental office and courtrooms. The second floor hosts a historical pictorial events of Avoyelles Parish events, acknowledgements and legends.

Embedded in the plaza in front lawn are plaques depicting our municipalities' dates of settlement, date incorporated, town icons and slogans. Other significances are Solomon Northup freed here, and The Legend of the Bowie Knife 318.253.8891 (State Representative Office) Free/allow 1 hour



Avoyelles Commission of Tourism  
8592 Hwy 1, Ste. 3  
Mansura, LA 71350

www.travelavoyelles.com  
Email: tourism@krocket.net

318.964.2025  
318.253.0585  
800.833.4195

# AVOYELLES PARISH

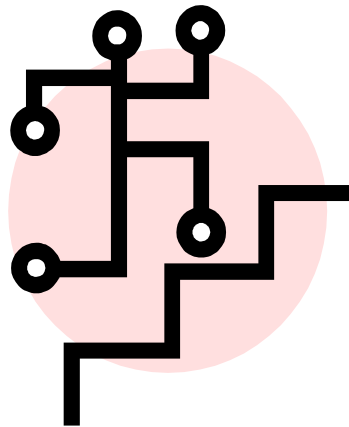
## FIELD TRIP GUIDE

### Contact Information

Ph: 318.964.2025  
318.253.0585  
800.833.4195

Fax: 318.253.0649

Email: tourism@krocket.net



**LOUISIANA**  
*Pick your Passion*

LouisianaTravel.com

# AVOYELLES PARISH

## FIELD TRIP GUIDE

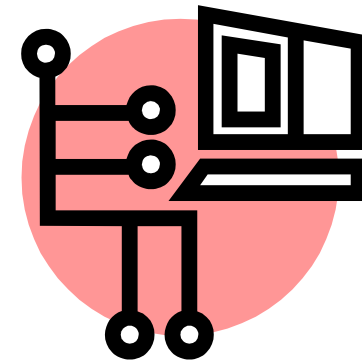


### Contact Information

Ph: 318.964.2025  
318.253.0585  
800.833.4195

Fax: 318.253.0649

Email: tourism@krocket.net



# Allons aux Avoyelles for recreational, historical, cultural, fun and exciting field trips!!



### Adam Ponthieu Grocery Store, 1927 & Big Bend Post Office, est. 1847

A country museum, representing a time capsule of Americana and old Avoyelles, reflecting the time period between 1900 and 1950. 318.717.4007 -\$2/ allow 1 hour

**Sarto Old Iron Bridge,** 1916, over Bayou des Glaises is located across from Adam Ponthieu Musuem in Big Bend. It was the first bridge listed on the National Register of Historic Places in Louisiana. 318.717.4007 Free/ allow 1 hour



Get ready to milk goats and taste cheese from the gift shop at **WesMar Goat Farms**. See how cheese is made at the working goat farm and road side zoo located in Moreauville, farm ready footwear is suggested. Owned and operated by Constantine Family. 318.985.2095 \$6/ allow 2 hours (2 teachers, 1 bus driver free)

### Bunkie Depot

Home of the Bunkie Chamber of Commerce, the depot, est. 1933 also doubles as a welcome center and railroad museum. Also for viewing, a war memorial and Union Pacific Caboose. Solomon Northup Trail Guide and information available here. 318.346.2575 Free/ allow 1 hour



### Hypolite Bordelon Home

An Early Creole pioneer dwelling built in c.1820 as a farmer's home. See a working mud chimney and bousillage walls. On the grounds is a barn and a photo opt, the outhouse. Nat'l. Register. 318.253.0284 \$2/ allow 1 hour



### Cottonport Museum and Cultural Center

Home of annual Quilt Festival in October. Learn why "Cotton was King" in a historical mural and nostalgic setting in downtown Cottonport.

318.876.3517 \$ Donation/ allow 1 hour

*To plan your field trips, call 318.964.2025 or 318.253.0585*



**Central Louisiana National Wildlife Refuge**, located in Fifth Ward offers talks and lectures on wildlife management, habitat conservation and restoration. Located on grounds are outdoor classroom settings (see below) and restroom facilities. Central LA WMA also manages Lake Ophelia and Grand Cote National Wildlife Refuges. Headquarters are located at 401 Island Road, Marksville. 318.253.4238 Free/ allow 2 hours

### Marc Dupuy Wildlife Walking Trail, Fifth Ward

Walk on a .5 mile walking trail with interpretative kiosks in a National Wildlife Refuge. An observation deck with telescopes is located at the end of the boardwalk overlooking vast acreage perfect for bird watching.

318.253.4238 Free/ allow 1-1/2 hours



### Tunica Biloxi Cultural and Educational Resources Center

Discover the history of the Tunica-Biloxi Tribe of Louisiana. View the TB Treasures and visit the Conservation and Restoration Laboratory. 318.240.6421 School Groups of 20+ \$2ea. Allow 2 hours

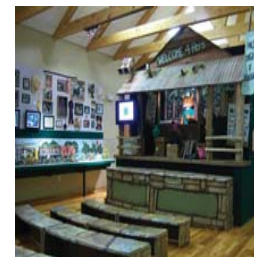


### Tunica Biloxi Nature Trail

Take a leisurely stroll and enjoy the natural beauty of the one-mile, tree-covered boardwalk which includes crossing points over the Coulee Des Grues waterway and adjacent to TBCERC. Free/ allow 1 hour

### Marksville State Historic Site

The thirty-nine acre park includes prehistoric Indian burial and ceremonial mounds, Indian Village sites with picnic facilities and museum. Tours begin in media room, tour of museum, and mounds, and interactive exhibits. 318.253.8954 Allow 3 hours



### Louisiana 4-H Museum

Unique multi-media exhibits bring to life the history and development of Louisiana 4-H since 1908. Features include the 4-H Hall of Fame, a 27' long miniature 3-D parade, timeline mural, artifacts and photos. 318.964.2245 Free/ 1 Hour

### Dr. Jules Charles Des-Fosse' House, c.1790

Built by Dominique Coco, Sr. and later restored in 1850 by Dr. DesFosse', the home is LA French Colonial styled. First home listed on the National Register of Historic Places located on Cochon de Lait Festival grounds. 318.964.2152 \$2/ allow 45 minutes



**?** *Ask us about Lunch Options*